



**Capital Homes**
Estate Agents & Valuers

238 Hedge Lane, London N13 5DA
Asking Price £499,995



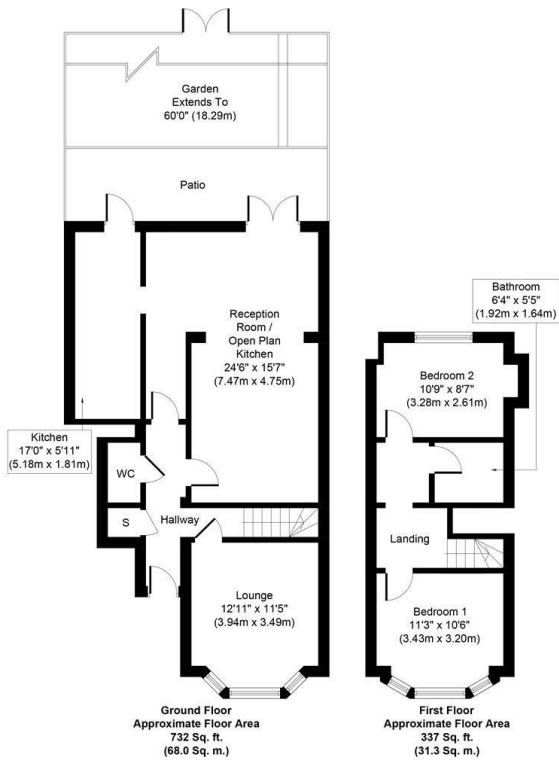


A three-bedroom, ground floor flat situated in an 1930s conversion offering over 1000 sq ft of living space includes huge reception, fully fitted, contemporary kitchen with integrated appliances, downstairs W/c, newly designed family bathroom, wooden floors, 60ft sole garden and sufficient storage space throughout.

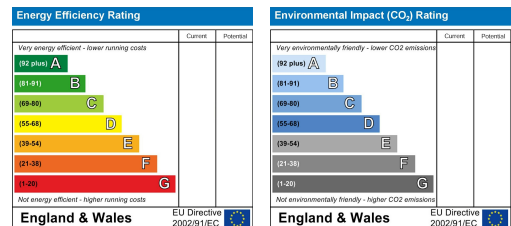


The property is near reputable schools, North Circular Road and has various bus routes to Silver Street mainline station and Wood Green underground station. The A10 and A406 provide easy access into London and beyond.

To arrange your viewing, contact Capital Homes as soon as possible to avoid disappointment!!



Whilst every attempt has been made to ensure the accuracy of the floor plan contained here, measurements of doors, windows, rooms and any other items are approximate and no responsibility is taken for any error, omission, or mis-statement. This plan is for illustrative purposes only and should be used as such by any prospective purchaser or tenant. The services, systems and appliances shown have not been tested and no guarantee as to their operability or efficiency can be given.
Copyright V360 Ltd 2022 | www.houseviz.com



1 Turnpike Lane
London
N8 0EP

0208 342 5555
info@capitalhomesestates.co.uk
www.capitalhomesestates.co.uk

Agents Note: Whilst every care has been taken to prepare these particulars, they are for guidance purposes only. All measurements are approximate are for general guidance purposes only and whilst every care has been taken to ensure their accuracy, they should not be relied upon and potential buyers/tenants are advised to recheck the measurements